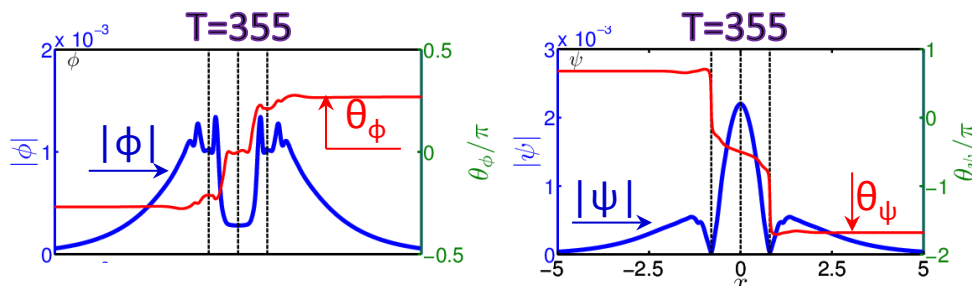
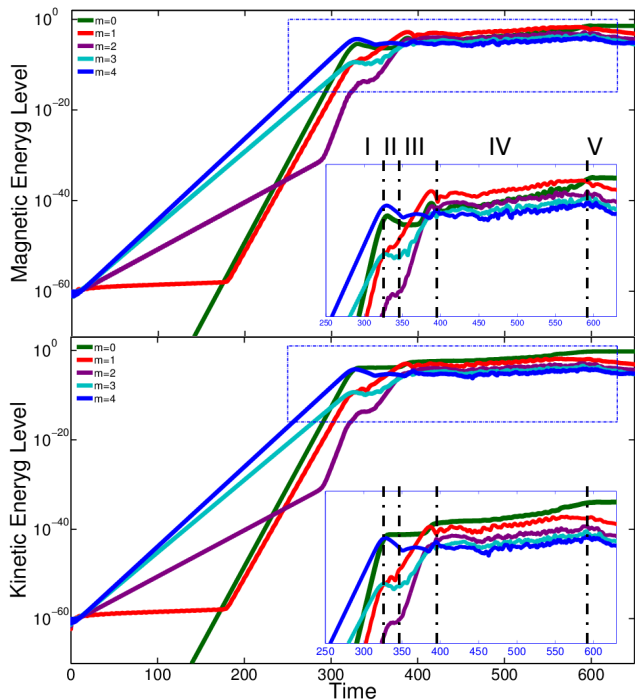


tearing mode instability in the presence of shear flows

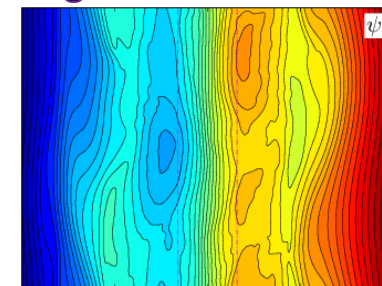
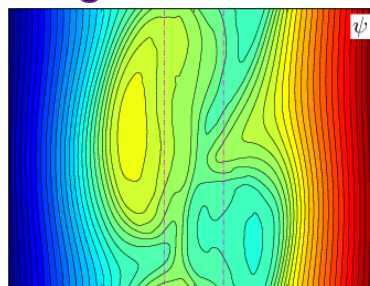
✂ **Direct nonlinear interaction** between the DTM and the KHI around current sheets is simulated based on reduced MHD model using an initial value code.

- ◇ **Phase I:** linear growth of the high m ($=4$) KH instability
- ◇ **Phase II:** KH instability saturation
- ◇ **Phase III:** New instability of the $m=1$ mode



- ◇ **Phase IV:** Rutherford-type phase
- ◇ **Phase V:** globally reconnected phase

T=550 (before global reconnection) **T=610** (after global reconnection)



Future work:

- ➡ A precise identification of the characteristics the $m=1$ mode in Phase III will be considered.
- ➡ The global reconnection associated with explosive growth of the DTM will be studied.